

Background

1. Company Background



Vision Energy & Power Pvt. Ltd. (VEPL) is registered at Office of Registrar of Company on Shrawan 2, 2073 with registration no 151997/073/074. It is registered in Inland Revenue Department on Shrawan 28, 2073 with PAN No. 604286558.

Various professionals and well experienced persons in hydropower sector have united together and come up with a concept of establishing this company, which will construct/invest in energy producing companies.

2. Vision, Mission & Objective of the company

- Vision**
- Become well establish energy producing company in Nepal.
- Mission**
- To utilize the available resources for the development of energy in the country
 - To ensure attractive long term return to our shareholders through professional management.
- Objective**
- Conduct feasibility study of transmission line and environment; perform detail engineering design, research and survey for the electricity development.
 - Generate electricity through small or medium scale projects by using alternative source of energy such as water, wind, solar power, biogas etc.
 - Sale of electricity to Nepal government and other institutions or supply of electricity directly to consumers whenever necessary in wholesale or other basis.

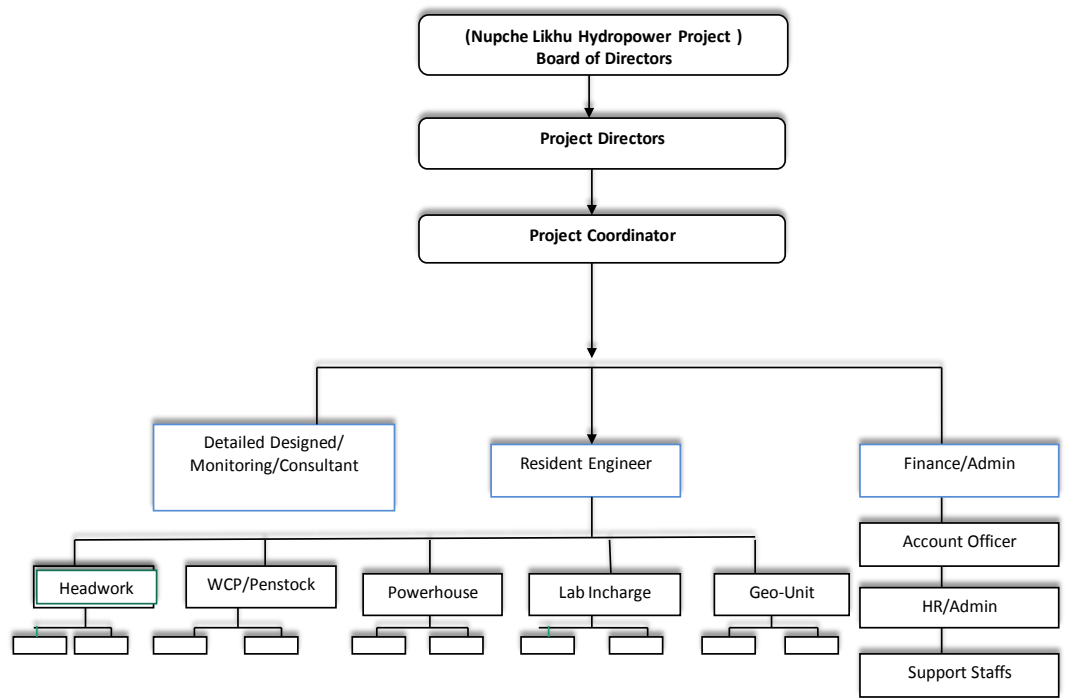
3. Board of Directors

S.N.	Name	Position	Qualification	Experience
1	T. N. Acharya	Chairman	FCA, B.Com	More than 14 years experience in various audit, public sector & hydropower sector. Ex BoD Member of CIT, NEA, NAC and Current BoD Member of NTA.
2	Ramesh Adhikari	Member	B. Com	20 years experience in various government, private and hydropower sector
3	Bhimsen K. Gautam	Member	MBS, RA	20 years in audit and various public sector
4	Desh Bandu Karki	Member	BBS and Bachelor's in Community Welfare Development	More then 5 years of experience in various sectors
5	Amar Nath Shrestha	Member	B. Arts	More than 15 years of experience as an Entrepreneur, Board member of various Private and hydropower sector. Currently BoD member of Chhyangdi Hydropower Ltd.
6	Saroj Koirala	Member	FCA, B.Com	10 years experience in audit & consultancy of various sector
7	Snigdha Bhatta	Member	BALLB	Involvement in the legal consultancies.

4. About the Chairman

Mr. T. N. Acharya is a fellow Chartered Accountant with more than 14 years of experience in audit and hydropower consultancy service. He is actively involved in development of various hydro powers in the form of investor and consultant. He is involved as financial consultant of various Hydropower companies on behalf of Banks also. He has various top level responsibilities in Nepal Electricity Authority, Citizen Investment Trust, Nepal Airlines Corporation and The Institute of Chartered Accountants of Nepal as Board Member. Presently, he is Board Director in Nepal Telecommunication Authority. He is mainly leading the Nupche Likhu Hydropower Project.

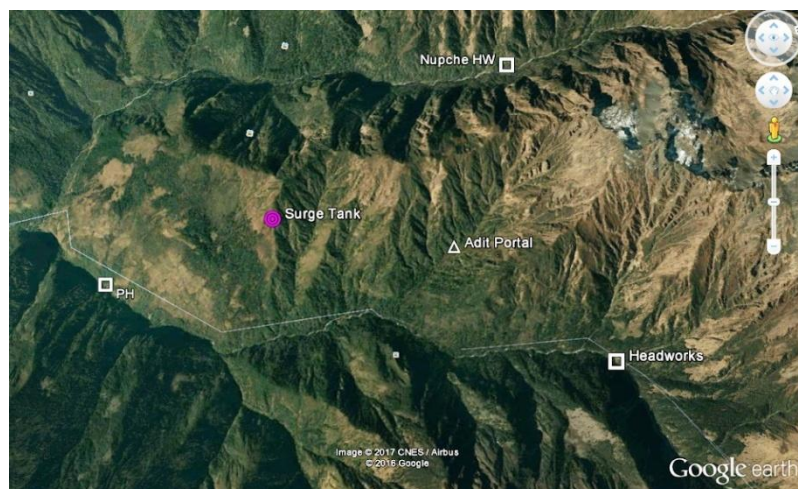
5. Proposed Organogram



6. Consulting team

S.N.	Particulars	Name of Consultant
1	Desk Study Report	E.I. Maven Pvt. Ltd
2	Feasibility Study Report for License (57.5 MW)	E.I. Maven Pvt. Ltd
3	Topographic Survey	R.K. Survey Company Pvt. Ltd.
4	EIA	Nepal Environmental and Scientific Services (P) Ltd.
5	ERT	Explorer Geophysical Consultants Pvt. Ltd.
6	Review of Feasibility Report	E.I. Maven Pvt. Ltd.
7	DPR	In process of selection

7. Project Description



VEPL is aiming to develop Nupche Likhu Hydropower Project in Ramechhap District using local technical, managerial and financial capability and is dedicated to supply the power to the National Grid to fulfill domestic energy demand.

The source of water for Nupche Likhu hydropower project is originated from snow fed rivers starting from the High Mountain/Hilly areas.

The proposed Nupche Likhu Hydropower Project is located in Gumdel VDC (Currenty Umakunda Rural Municipality) of Ramechhap District, Nepal. The proposed intake of the Nupche Likhu Hydropower Project is located north of Lahaksewar village in left bank of Nupche Khola at an elevation of 3330 m above msl.

The project is proposed to develop with an installed capacity of 57.5 MW by utilizing a design discharge of 7.11 m³/s with a gross head of 994 m.

VEPL propose to construct project at an estimated cost of Rs. 8,483.76 Million.

8. Salient features of the project

1. General	
Name of the Project	Nupche Likhu Hydropower Project
Type of the Project	Snow fed Run-off River Hydropower Project
2. Location	
Longitude	86°26'30" E - 86°30'30" E
Latitude	27°40'37" N - 27°43'37" N
Zone/ Development Region	Janakpur Zone/Central Development Region
District	Ramechhap
Project Location (VDCs)	Gumdel VDC
River	<u>Nupche Khola and Likhu Khola</u>
3. Hydrology	
Catchment Area	150 Km ²
Design Discharge (Q 45 %)	7.11 m ³ /s
4. Headworks	
Type of Intake	Orifice, Side Intake
Intake Elevation	3330 m above msl
Type of Weir	Boulder line weir
5. Settling Basin	
Basin No.	2
Type	Double Bay Duffer at each side
Size	50 m × 5 m each
6. Headrace Pipe	
Headrace Pipe	1264 m
Headrace Pipe Dia	1.3 m & 1.5 m (Likhu & Nupche River)
7. Tunnel Length	
Nupche Intel Portal to Junction	1690 m
Likhu Intel Portal to Junction	1435 m
Outlet/Surge Tank to Junction	3250 m
Adit Tunnel Length	450 m
Tunnel Size	2.8m x 3.5m
8. Penstock Pipe Length	
Total Steel Penstock Pipe	2356 m
Internal Diameter	1.6-1.8 m
Thickness	8mm to 56mm

	Steel Lined Vertical shaft	308m
	Steel Lined Tunnel	540 m
9.	<u>Power House</u>	
	Type	Surface
	Power House Elevation	2336 m above msl
	Number of Generating Units	3
	Turbine Type	Pelton
10.	<u>Tail-Race Canal</u>	
	Type	Box Culvert
	Length	20 m
11.	<u>Power and Energy</u>	
	Gross Head	994 m
	Net Head at Full Flow	974.12 m
	Installed Capacity	57.5 MW
	Generated Energy per Annum	139.76 GWh, 36.61% (Dry) and 241.98 GWh, 63.39% (Wet) Total: 381.74 GWh
12.	<u>Transmission Line & Grid</u>	This project has to made an agreement with the approx. 30 km up to National grid at 132 KV switchyard of Proposed NEA Hub at Garjang Sub-Station, Ramechhap district.
13.	<u>Approach Road Connection</u>	There is an existing all weather road up to Manthali which is 131 km from Kathmandu. From Manthali to Kyama, Gumdel VDC, there is partly stone paved earthen road which is about 110 km long and to the proposed PH site of the project, there exist a foot trail of about 12 km.
14.	<u>Project Road to HW & PH</u>	Around 34 km
15.	<u>Approximate Cost of Project</u>	8,483.76 million NPR (Subjected to final feasibility study Report)
16.	<u>Approximate Construction Period :</u>	4 Years

Progress Report

FIRST STAGE: PRE-Power Purchase Agreement

S.N	Activities	Status	
		Completed	Going On
1	Survey License	License obtained of 57.5 MW	Completed
2	Feasibility Study	The consultant team has submitted Draft Feasibility Study Report	Final Feasibility Study Report preparation is in Final Stage
3	Topography Survey	Topography Survey Report Obtained	Completed
4	Approval from Ministry of Forest.	Approval for Survey Work is obtained for capacity of 21.5 MW.	In the process to get approval for EIA & upgraded power of 57.5 MW.
5	Quality Measurement of Water	Report of Water Measurement has been obtained.	Completed.
6	Environment Impact Assessment (EIA) study	EIA Consultant has completed initial field visit and has submitted preliminarily report. Further the consultant has submitted TOR in Department of Electricity Development (DOED) for approval	The consultant team has committed to complete the assignment within Bhadra, 2075
7	Electronic Resistivity Tomography (ERT)	ERT Consultant has Completed ERT Works and has submitted Final Report.	Completed.
8	Gauge Station Installation	Automatic Gauge Station has been Installed at Project Site.	Collection of Data from the Gauge Station is going on.
9	Grid Agreement	Connection Agreement has been entered with NEA to evacuate the power at Garjyang Sub-station. (Estimated distance 30 KM).	Completed.
10	PPA	Draft PPA has been completed.	PPA process is in final stage
11	Detail Design	Agreement with technical consultant is in final stage.	Agreement with technical consultant is in final stage.
12	Loan financing from Bank	Finalization of Lead Bank for loan financing is in final stage.	Necessary discussions regarding terms and conditions of loan is being regularly held with Banks.
13	Equity Collection	Equity investment is being aggressively collected as per the Investment Module of the Company.	Regular meetings, presentations are being conducted for Investment.

Second Stage : Financial Closure

After PPA, the financial closure will be done with Banks. The company aims to finalize financial closure within 12 to 18 months from the date of PPA. Necessary discussions are being held with the Banks in this regard.



Third Stage: Construction Work



The company will start its construction work after PPA. The company plans to generate electricity within the period of 4 years from the commencement of construction work subject to complex disturbances. In this way, the company will generate electricity within 6 years from the date of obtaining survey license. The construction work will be commenced after the completion of the first stage and second stage.

Investment

Demands of energy in Nepal is gradually increasing along with population growth and economic development. As there is less supply of electricity, Nepal has to import electricity from India regularly. Hence, Development of Hydropower project is need of the country which will help to industrialize the nation by eliminating current load shedding. As the hydropower company gives longtime benefits to its shareholder, investment in this sector can be assumed as future pension plan.

Minimum and maximum Investment in 2 Years

For Individual-Minimum 10 Lakh and Maximum 2 Crore and

For Institution: Minimum 20 Lakh and Maximum 10 Crore

Investment Schedule

55% of Commitment amount by Ashwin end 2075 and 45% of Commitment amount by Ashwin end 2076



=====
Vision Energy & Power Pvt. Ltd.
New Baneswor, Kathmandu, Nepal
Phone No: 01-4785528
Email-info@veplinfo.com
Website:www.veplinfo.com